



**Medical & Industrial
Gas Installations & Maintenance**



a history of
EXCELLENCE

COMPANY PROFILE

Established in 1984, K&H Medical Ltd has secured a reputation as one of the leading companies in the medical gas service industry. Using the most advanced installation and maintenance technology, we currently install over 25% of the UK's total medical gas pipeline projects, making us one of the most experienced providers in the field.

The founding member of K&H Medical Ltd, along with those who join our team are highly qualified professionals with many years of specialised experience within the industry.

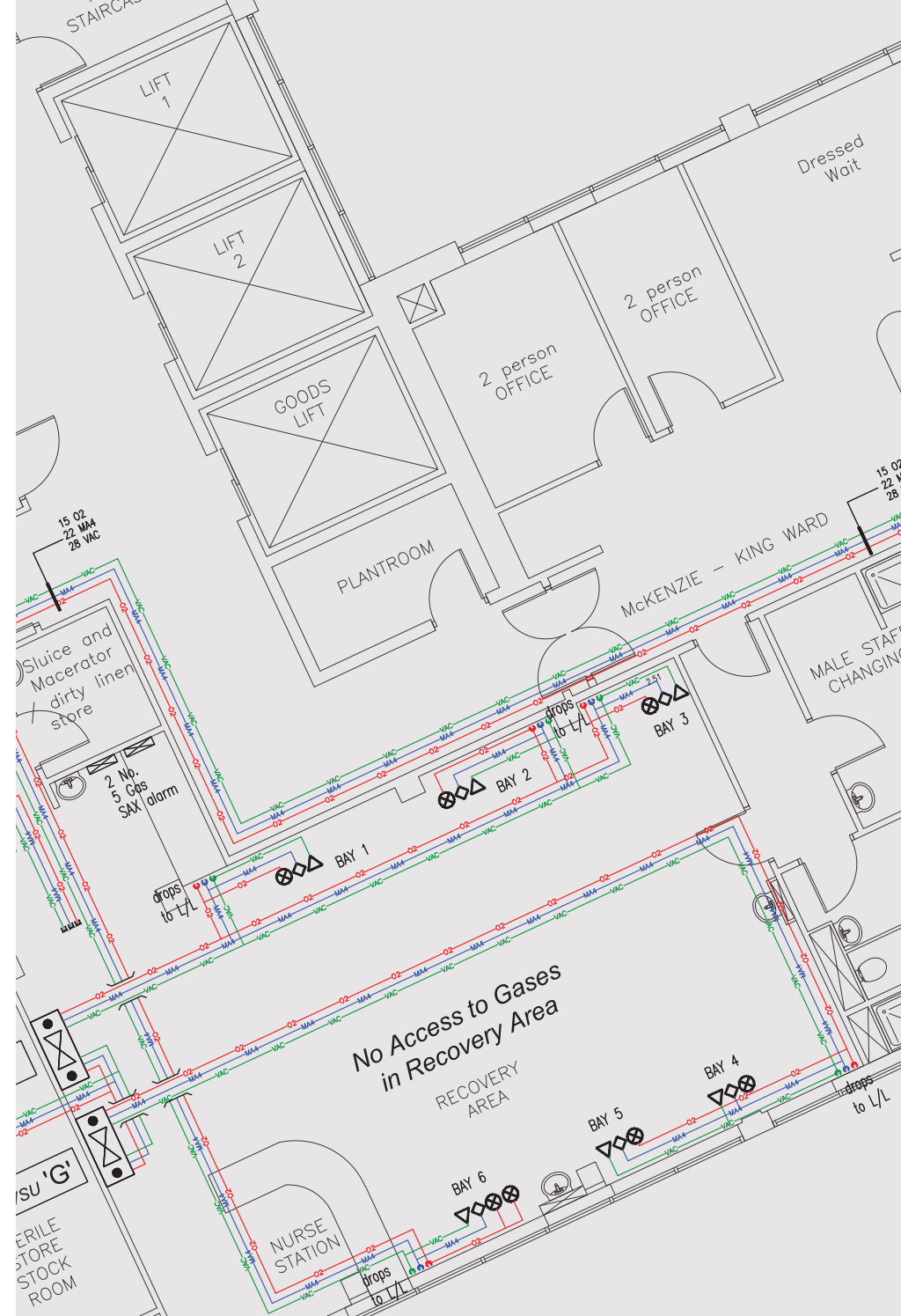
OUR SERVICE INCLUDES:

gas distribution systems	patient environment installations
vacuum systems	electrical installations
medical and surgical systems	laboratory pipelines
manifolds	authorised persons services (MGPS)
alarm systems	QC testing (MGPS)
gas scavenging systems	maintenance

strategic **DESIGN & PLANNING**

K&H Medical Ltd maintains a proven track record of co-ordinating bespoke projects with demanding schedules. We plan, design and then deliver a unique solution tailored to your exact requirements. Attention to detail in the designing and planning stages enables our team to ensure that our proposal will be achieved within your budget.

Our in-house CAD team can supply a full HTM 02-01 design incorporating all the necessary working drawings. This will ensure a smooth turnkey installation.



CASE STUDY: Southend Hospital

New Pentaplex variable speed 13 bar air plant supplied and installed directly for the hospital | **£100k**



unique tailored **SOLUTIONS**

MEDICAL GAS INSTALLATIONS

K&H Medical Ltd have an in-depth understanding of the issues facing healthcare professionals and their industry. When you appoint K&H Medical Ltd you are safe in the knowledge that our dedicated project team will deliver an integrated service with minimal disruption to your service. As every situation is unique, we customise every single project we undertake to suit you.



CASE STUDY: Kings College

Enabling works for the new ITU including a new triplex vacuum plant | **£100k**

a service **YOU CAN TRUST**

INDUSTRIAL GAS INSTALLATIONS

Our commitment to quality has instilled confidence right across the pharmaceutical and industrial research industries on a national scale. Our partnerships within these industries have provided us with a very strong foundation as we continue to expand, thriving on repeat business from our impressive portfolio of clients.



All our staff are qualified tradesmen, trained in contract management, who are committed to offering quality at a competitive price



CASE STUDY: University of Brighton

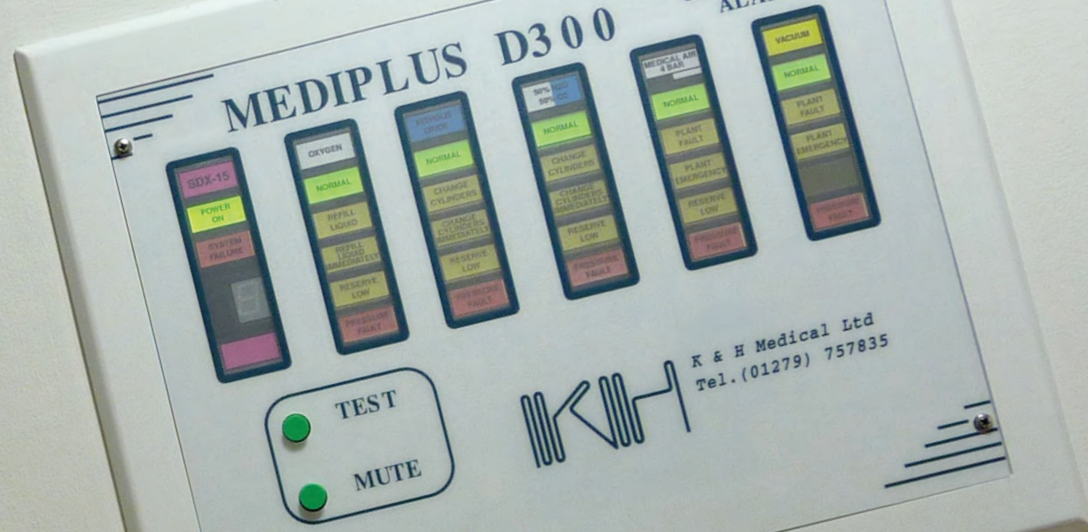
Refurbished laboratory including new manifolds and a new air plant | **£80k**

CASE STUDY: Britvic, Hemel Hempstead

New manifold complete with laboratory outlet points. All pipework was in stainless steel with compression fittings | **£50k**

CASE STUDY: Rothamsted Centre

New compressed air plant along with manifolds and outlets feeding building 67 | **£50k**



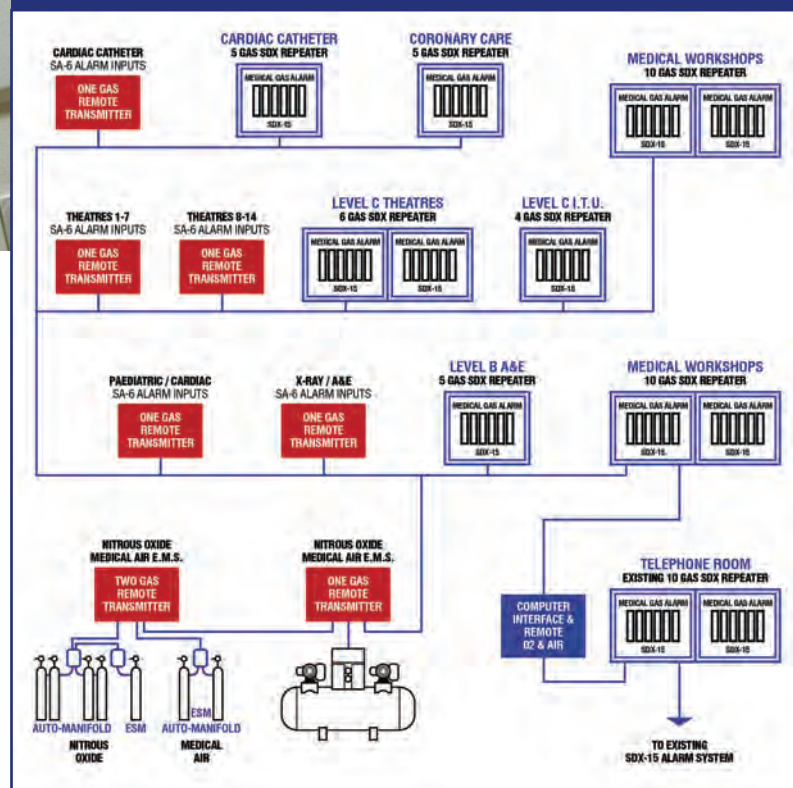
CASE STUDY: University of East Anglia
 Supplied and installed a gas detection system
 monitoring a number of labs | **£40k**

the highest **STANDARDS**

ELECTRICAL INSTALLATIONS

As well as complying to BSI and UKAS standards, K&H Medical Ltd are the only company in the UK to obtain an NICEIC accreditation within the medical gas industry. This division ensures all electrical wiring installations, testing and commissioning, maintenance and fault-finding are carried out to exact standards. K&H Medical Ltd are capable of installing comprehensive medical gas alarm systems for the largest facilities.

SCHEMATIC DIAGRAM OF K&H MEDICAL LTD MEDICAL GAS ALARM SYSTEM



24/7, **365 DAYS A YEAR**

PREVENTATIVE MAINTENANCE

We pride ourselves on the strict service maintenance contracts we govern, providing round-the-clock surveillance to give complete peace of mind for all piped medical gases and vacuum systems. This includes constant examination, testing and checking of manifolds, medical gas plants, distribution systems including pipework, valves, terminal units, theatre fittings, booms, pendants and alarm systems.

Our maintenance staff thoroughly examine all equipment every quarter term with a complete report, as well as correcting faults that have occurred. Our call-out response is within four hours of the initial call being received.



Our call-out response
is within four hours
of the initial call
being received



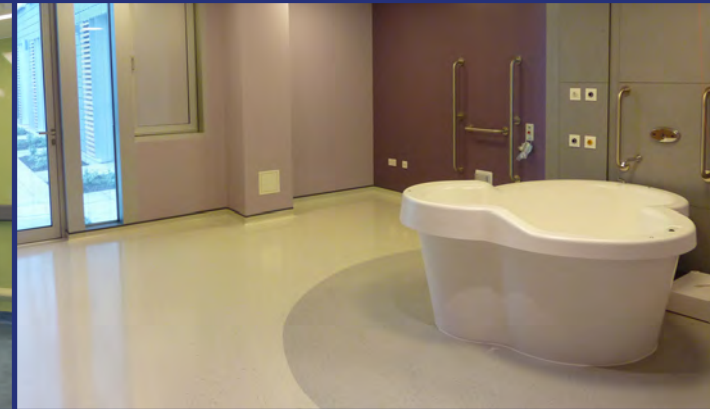
Unit 25, M11 Business Link, Parsonage Lane,
Stansted, Essex CM24 8GF

Telephone: +44 (0) 1279 757835

Facsimile: +44 (0) 1279 812894

Email: admin@khmedical.co.uk

Website: www.khmedical.co.uk



Medical & Industrial Gas Installations & Maintenance